

The Broken Chain

We little knew that morning
That God would call your name.

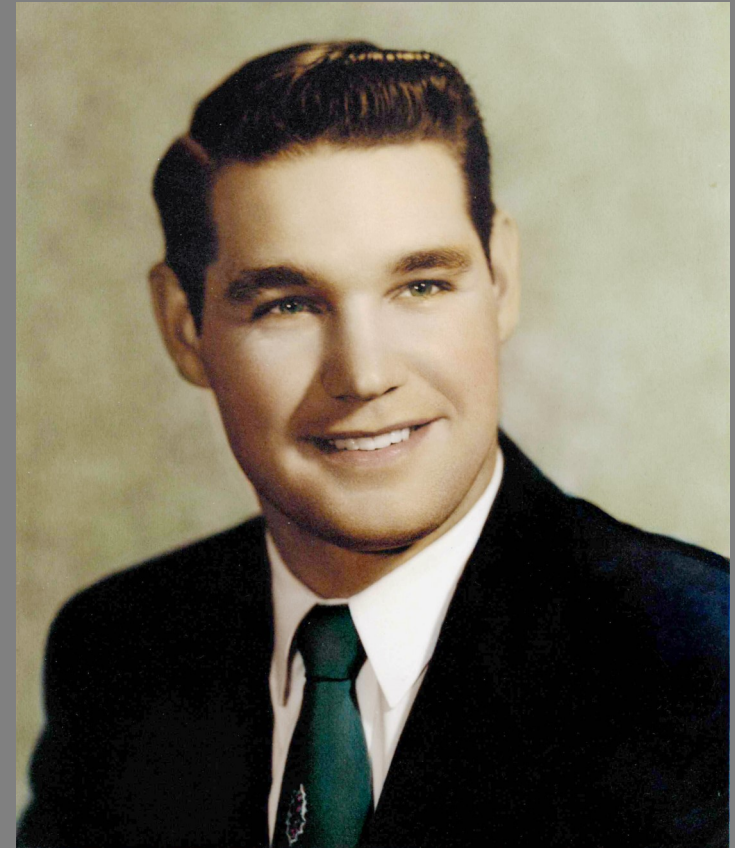
In life we loved you dearly,
In death we do the same.

It broke our hearts to lose you,
You did not go alone;
For part of us went with you,
The day God called you home.

You left us peaceful memories,
Your love is still our guide;
And though we cannot see you,
You are always at our side.

Our family chain is broken,
And nothing seems the same;
But as God calls us one by one,
The chain will link again.

In Loving Memory

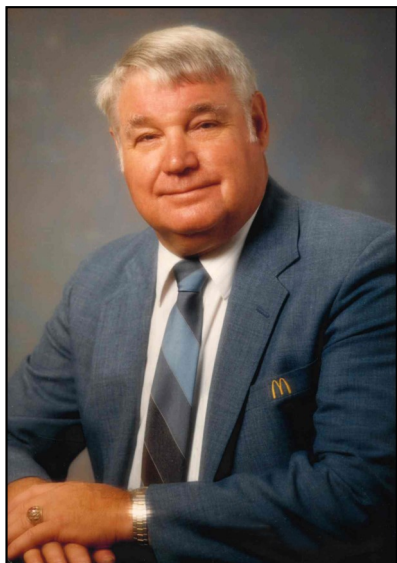


Bill Edward Atchley

1934 ~ 2024

In Loving Memory

Bill Edward Atchley



BORN

May 31, 1934
Teton City, Idaho

DIED

July 18, 2024
Burley, Idaho



FUNERAL SERVICE

11:00 a.m. Saturday, August 10, 2024
Rasmussen-Wilson Funeral Home
1350 E. 16th St. ~ Burley, Idaho

Conducting.....Steven Gerratt
 Family Prayer Randy Parish
 Organist Brenda Bailey
 Opening Hymn.....*How Great Thou Art*
 Guitar Performance by Bart Parish
 Opening Prayer.....Sonja Parish
 Life Sketch.....Lon Atchley, *brother*
 Life Portrait.....Special Memory Video
 Scripture Reading Lori Parish
 Musical Selection *The Old Rugged Cross*
 Piano Solo by Brenda Bailey
 Message of Comfort Steven Gerratt
 Musical Selection *In the Garden*
 Performed by Natalie Miles
 Accompanied by Brenda Bailey
 Closing Prayer.....Cory Parish



INTERMENT

11 a.m. Monday, August 12, 2024
Pineview Cemetery ~ Ashton, Idaho

Officiating..... Reverend Russell Rhodes
 Committal PrayerRandy Parish, *son-in-law*
 Military RitesAmerican Legion, Ashton Post 89
 Idaho Army National Guard

*A reception will follow the graveside at the Ashton Community Methodist Church
located at 178 S. 5th St., in Ashton, Idaho*

CASKET BEARERS

Michael Parish, Nate Parish, Aaron Parish
Allen Atchley, Zack Rowe, Chris Wolf, Hub Skeen