

## *The Whispering Wind*

*It's normal that you shed a tear  
When first I took my leave  
But know that I am happy here  
No need for you to grieve*

*The beauty that's surrounding me  
Would take your breath away  
There's colors that I can't describe  
The air's a sweet bouquet*

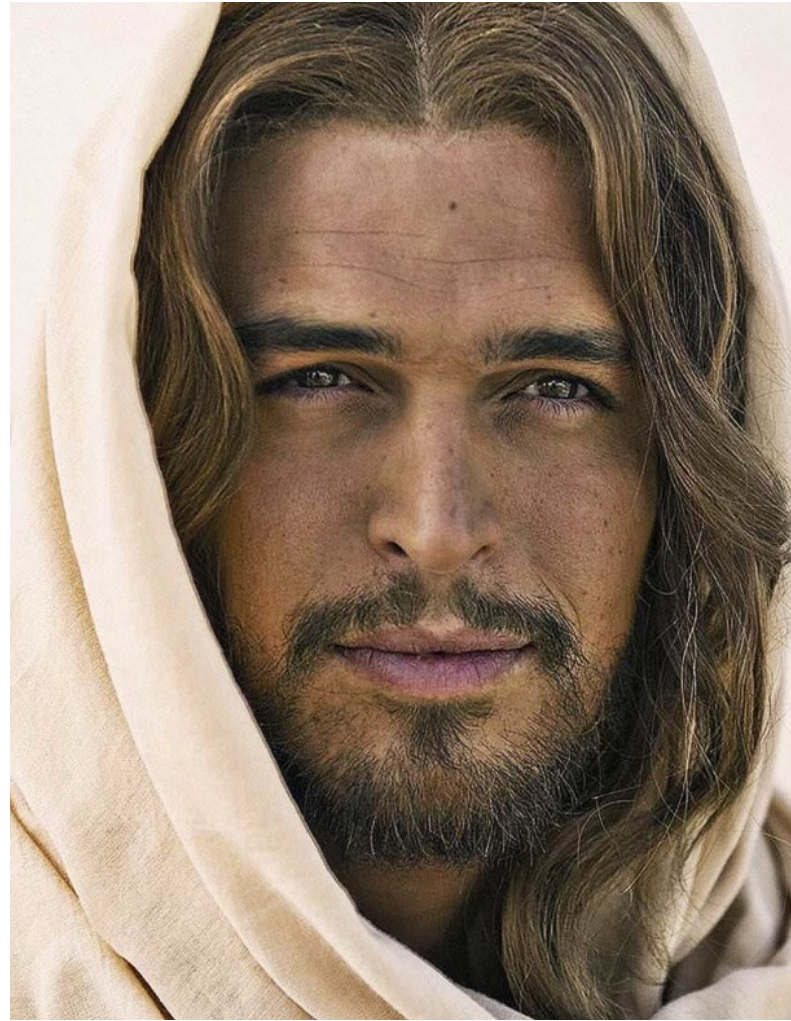
*Don't worry 'bout the things unsaid  
There's nothing to forgive  
Don't lay your heart upon the past  
Just let our memories live*

*And though your earthly eyes can't see  
Believe that I am 'there  
Whene'er you feel the whispering wind  
Flow gently through your hair*

*I'm there when fireflies light the dark  
When candles mark a year  
I'm there when you are far from home  
And when you need an ear*

*I'm always just a thought away  
Our souls could never part  
Connected for eternity  
Forever in your heart*

*Copyright 2022 Donna Schilling*



# Teresa Rae Barlow



## **BORN**

January 14, 1963  
Clearfield, Utah

## **DIED**

May 3, 2023  
Burley, Idaho

---

### **DAUGHTER OF**

Raymond Kenny & Darlene Jean Garfield

### **MARRIED**

Shane Duke Barlow  
September 1, 2007

### **MOTHER OF**

Tessla (Jacoby) Judd, Breanna (Alvin) Buschhorn  
Crystal (Valentin) Lara, Kyndra Barlow  
Hilary Kenny~*deceased*

### **GRANDMOTHER OF**

14 Grandchildren

## **MEMORIAL SERVICE**

11:00 a.m. Friday May 12, 2023  
Rasmussen-Wilson Funeral Home  
1350 E. 16th St. ~ Burley, Idaho



### **Officiating**

Pastor Mike Yost ~ The Springs Calvary Chapel

### **Welcome & Opening Prayer**

### **Memory Video & Life Sketch**

### **Sharing of Memories**

### **Musical Selection**

*Smile*  
performed by Brittaney Searle

### **Words of Comfort & Benediction**

---

*Funeral Directors*

**RASMUSSEN-WILSON FUNERAL HOME**

www.rasmussenwilson.com

1350 East 16th Street ~ Burley, Idaho